

Eddy Smith
 Selected Etchings
 Extended through February 15, 2016

1.



Eddy Smith

Die Grundlagen des 20. Jahrhunderts
 from the portfolio *Die Grundlagen des 20. Jahrhunderts*
 ["The Foundations of the 20th Century"]
 1921

Etchings (one of ten original etchings in portfolio)
 11 1/8 x 8 3/8 inches (28.3 x 21.3 cm)
 Edition of 200
 Initialed, titled & dated on recto
 (SMIT 5.01)

2.



Eddy Smith

Jeder Herr – seine eigene Dame!
 from the portfolio *Die Grundlagen des 20. Jahrhunderts*
 ["The Foundations of the 20th Century"]
 1921

Etchings (one of ten original etchings in portfolio)
 11 1/8 x 8 3/8 inches (28.3 x 21.3 cm)
 Edition of 200
 Initialed, titled & dated on recto
 (SMIT 5.02)

3.



Eddy Smith

Jede Dame – ihr eigener Herr!
 from the portfolio *Die Grundlagen des 20. Jahrhunderts*
 ["The Foundations of the 20th Century"]
 1921

Etchings (one of ten original etchings in portfolio)
 11 1/8 x 8 3/8 inches (28.3 x 21.3 cm)
 Edition of 200
 Initialed, titled & dated on recto
 (SMIT 5.03)

4.



Eddy Smith

Die Leibgarde der Kaiserin!
from the portfolio *Die Grundlagen des*
20. Jahrhunderts
["The Foundations of the 20th Century"]
1921

Etchings (one of ten original etchings in
portfolio)
11 1/8 x 8 3/8 inches (28.3 x 21.3 cm)
Edition of 200
Initialed, titled & dated on recto
(SMIT 5.04)

5.



Eddy Smith

Solus cum sola in loco semoto...
from the portfolio *Die Grundlagen des*
20. Jahrhunderts
["The Foundations of the 20th Century"]
1921

Etchings (one of ten original etchings in
portfolio)
11 1/8 x 8 3/8 inches (28.3 x 21.3 cm)
Edition of 200
Initialed, titled & dated on recto
(SMIT 5.05)

6.



Eddy Smith

Buridan's Esel
from the portfolio *Die Grundlagen des*
20. Jahrhunderts
["The Foundations of the 20th Century"]
1921

Etchings (one of ten original etchings in
portfolio)
11 1/8 x 8 3/8 inches (28.3 x 21.3 cm)
Edition of 200
Initialed, titled & dated on recto
(SMIT 5.06)

7.



Eddy Smith

Der Jungfrauenschreck.
from the portfolio *Die Grundlagen des*
20. Jahrhunderts
["The Foundations of the 20th Century"]
1921

Etchings (one of ten original etchings in
portfolio)
11 1/8 x 8 3/8 inches (28.3 x 21.3 cm)
Edition of 200
Initialed, titled & dated on recto
(SMIT 5.07)

8.



Eddy Smith

Der Exhibitionist.

from the portfolio *Die Grundlagen des*

20. Jahrhunderts

["The Foundations of the 20th Century"]

1921

Etchings (one of ten original etchings in portfolio)

11 1/8 x 8 3/8 inches (28.3 x 21.3 cm)

Edition of 200

Initialed, titled & dated on recto

(SMIT 5.08)

9.



Eddy Smith

Cotyto, die Muse der Unzucht

from the portfolio *Die Grundlagen des*

20. Jahrhunderts

["The Foundations of the 20th Century"]

1921

Etchings (one of ten original etchings in portfolio)

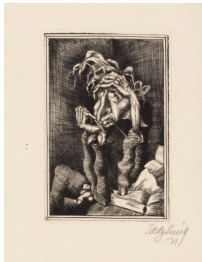
11 1/8 x 8 3/8 inches (28.3 x 21.3 cm)

Edition of 200

Initialed, titled & dated on recto

(SMIT 5.09)

10.



Eddy Smith

Ihm fällt nichts mehr ein!

from the portfolio *Die Grundlagen des*

20. Jahrhunderts

["The Foundations of the 20th Century"]

1921

Etchings (one of ten original etchings in portfolio)

11 1/8 x 8 3/8 inches (28.3 x 21.3 cm)

Edition of 200

Initialed, titled & dated on recto

(SMIT 5.10)

11.



Eddy Smith

Der Jäger

["The Hunter"]

from the portfolio *Die schwarze Mappe*

["The Black Folder"]

1924

Etching

15 1/4 x 11 1/2 inches (38.7 x 29.2 cm)

- sheet

Initialed, titled & dated on recto

(SMIT 12)

12.



Eddy Smith

Lou

from the portfolio *Die schwarze Mappe*

["The Black Folder"]

1924

Etching

15 1/4 x 11 1/2 inches (38.7 x 29.2 cm)

- sheet

Initialed, titled & dated on recto

(SMIT 8)

13.



Eddy Smith

Der Missionar

["The Missionary"]

From the portfolio *Die schwarze Mappe*

1924

Etching

15 1/4 x 11 1/2 inches (38.7 x 29.2 cm)

- sheet

Initialed, titled & dated on recto

(SMIT 11)

14.



Eddy Smith

Die Zwieltichtsuppe

["The Twilight Soup"]

from the portfolio *Die schwarze Mappe*

["The Black Folder"]

1924

Etching

15 1/4 x 11 1/2 inches (38.7 x 29.2 cm)

- sheet

Initialed, titled & dated on recto

(SMIT 10)

15.



Eddy Smith

Der Erfinder

["The Inventor"]

from the portfolio *Die schwarze Mappe*

["The Black Folder"]

1924

Etching

15 1/4 x 11 1/2 inches (38.7 x 29.2 cm)

- sheet

Initialed, titled & dated on recto

(SMIT 9)